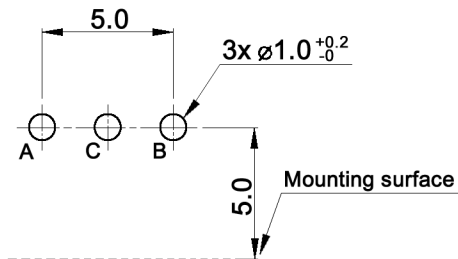


OUTPUT SIGNAL FORMAT

Shaft rotational direction	Signal	Output
C.W.	Terminal A-C	OFF ON
	Terminal B-C	OFF ON
C.C.W.	Terminal A-C	OFF ON
	Terminal B-C	OFF ON

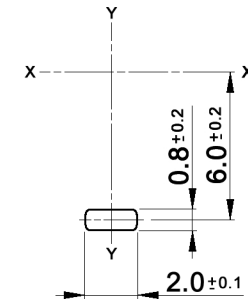
P.C.B. MOUNTING
Viewed from mounting side



Specifications:

- Contact rating: 10mA, 5V DC (1mA min.)
- Insulation resistance: 100MΩ min. at 250V DC / 1mA
- Dielectric strength: 300V AC for 1 minute
- Operating temperature: -40°C to +85°C
- Storage temperature: -40°C to +85°C
- Rotational life: 15 000 cycles
- Detent torque: 10 +/-5mNm
- Resolution: 15 pulses
- No. of detents: 30 detents; step angle: 12° +/-3°
- Soldering conditions: 260 +/-5°C, 5 +/-1.0sec.
- Compliance: RohS III (2015/863/EU)

LUG DETAIL



Tolerances: ≤10: ±0.3mm 10-100: ±0.5mm	Date	Name
	04/08	dr
Position lug	07/22	dr
Temperatures	11/12	dr
Output signal format	03/11	dr
Modifications	Date	Name

MER9-15115AM7R

knitter-switch

30 14 47

Page

1/1